

## Model: SP-A290

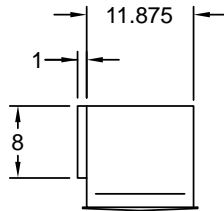
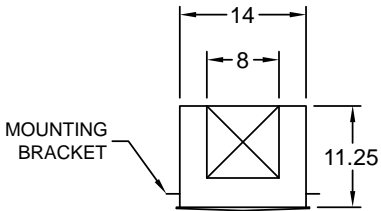
### Ceiling Exhaust Fan

#### Standard Construction Features:

- Corrosion resistant galvanized steel scroll and housing - Sound absorbing insulation - White designer non-yellowing grille - Rectangular outlet duct collar with integral spring loaded backdraft damper - Double inlet forward curved wheel - Plug type disconnect - Adjustable mounting brackets - Field rotatable discharge

#### Selected Options & Accessories:

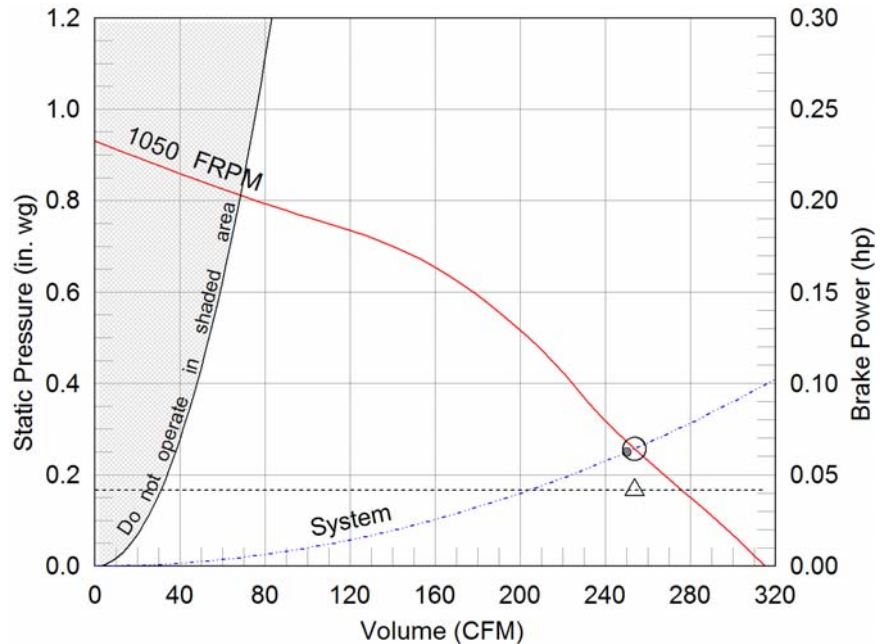
Motor with Thermal Overload  
 Motor with 40 Degree C Ambient Temperature  
 UL/cUL 507 Listed - Electric Fan  
 Designer Grille  
 Polypropylene Wheel Material



Dimensional	
Quantity	1
Weight w/o Acc's (lb)	20
Weight w/ Acc's (lb)	20

Performance	
Requested Volume (CFM)	250
Actual Volume (CFM)	254
External SP (in. wg)	0.25
Total SP (in. wg)	0.258
Fan RPM	1050
Amps (A)	0.72
Elevation (ft)	1,106
Airstream Temp.(F)	70
Air Density (lb/ft <sup>3</sup> )	0.072
Sones	3.0

Motor	
Motor Mounted	Yes
Input Watts (W)	81.0
Voltage/Cycle/Phase	115/60/1
Enclosure	ODP



- △ Operating Bhp point
- Operating point at Total SP
- Operating point at External SP
- Fan curve
- - - System curve
- · · Brake horsepower curve

#### Notes:

All dimensions shown are in units of in.  
 \*FLA is approximate and will vary slightly with the motor.  
 LwA - A weighted sound power level, based on ANSI S1.4  
 dBA - A weighted sound pressure level, based on 11.5 dB  
 attenuation per Octave band at 5 ft  
 Sones - calculated using AMCA 301 at 5 ft  
 AMCA certified ratings seal applies to some ratings only.  
 Wattage is shown at free air.  
 Wattage is approximate and may vary between motors.

