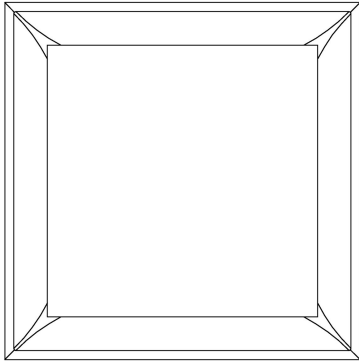


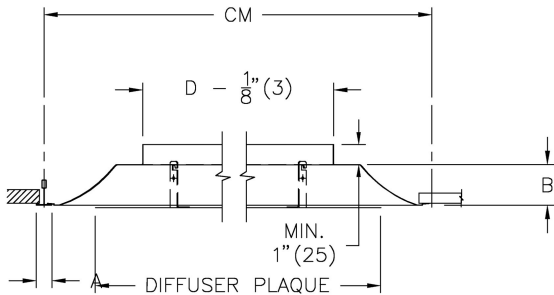
SPD Steel Square Plaque Diffuser



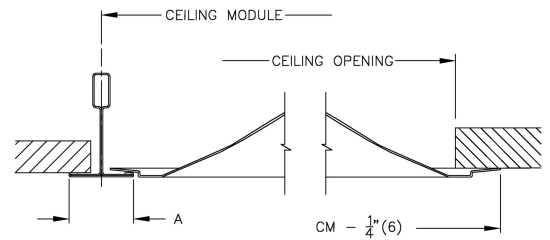
Duct Diameter (in.):	6, 8
Backpan Height (B):	1.125"
Nom Ceiling Module:	12"x12"
Nom Ceiling Opening: (Surface Mount App)	10.5"x10.5"

Border: 31

T-Bar Lay-In 1" and 9/16" Flat Tee Applications (A) / Surface Mount



Frame Detail:



Notes:

- 360° radial horizontal air pattern
- Removable face panel
- Factory tolerance $\pm 1/32$ " (1)

Material:

- Diffuser: Steel

Finish:

- B12: White Powder Coat

PROJECT:
ENGINEER:
CUSTOMER:

SUBMITTAL DATE: