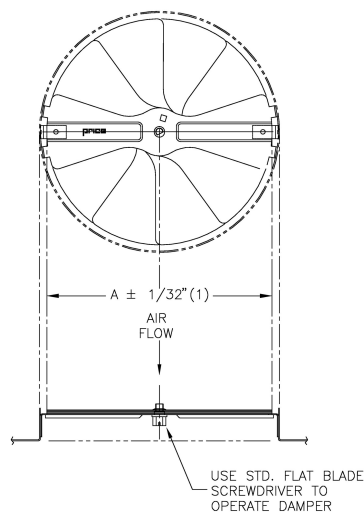


VCR9 Radial Damper Diffuser Mounted



- Notes:
- Damper controls air volumes from fully open to fully closed
 - Damper mounts directly onto diffuser neck inlet. Nominal Inlet Sizes are 6 to 14
 - Cannot be mounted to diffuser neck on RCD, RCDA, or RCDE models
 - In high vibration applications, it is recommended that sheet metal screws are used on the retaining tabs
 - Factory tolerance $\pm 1/32"$ (1)

- Material:
- Galvanized Steel
- Finish:
- MILL: Mill Finish

Nom Duct	A
6	5 1/2
8	7 1/2
10	9 1/2
12	11 1/2
14	13 1/2

PROJECT:
ENGINEER:
CUSTOMER:

SUBMITTAL DATE: