

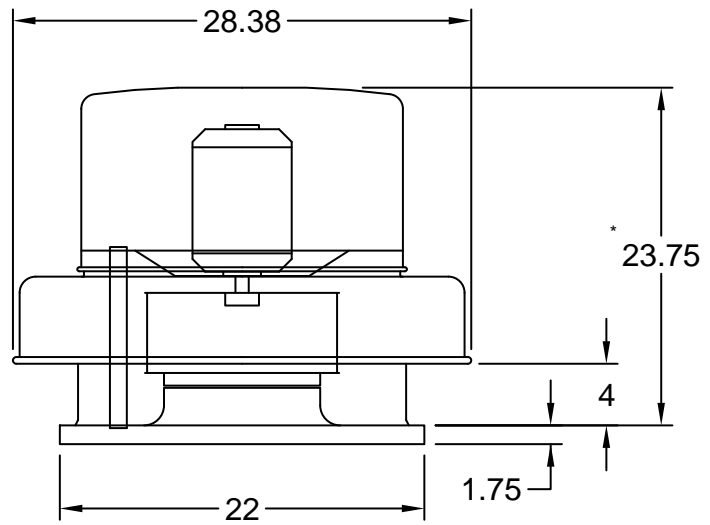
## Model: G-143-VG

Direct Drive Centrifugal Roof Exhaust Fan

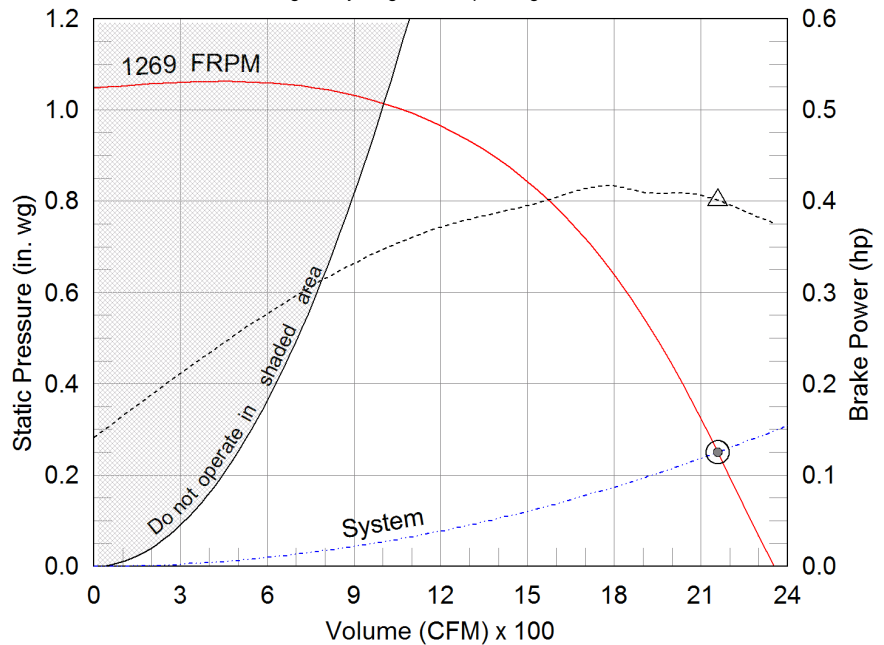
| Dimensional           |             |
|-----------------------|-------------|
| Quantity              | 1           |
| Weight w/o Acc's (lb) | 62          |
| Weight w/ Acc's (lb)  | 62          |
| Roof Opening (in.)    | 18.5 x 18.5 |

| Performance            |       |
|------------------------|-------|
| Requested Volume (CFM) | 2,158 |
| Actual Volume (CFM)    | 2,158 |
| External SP (in. wg)   | 0.25  |
| Total SP (in. wg)      | 0.25  |
| Fan RPM                | 1269  |
| Operating Power (hp)   | 0.4   |
| Elevation (ft)         | 1,106 |
| Airstream Temp.(F)     | 70    |
| Air Density (lb/ft3)   | 0.072 |
| Tip Speed (ft/min)     | 4,858 |
| Static Eff. (%)        | 21    |

| Motor               |          |
|---------------------|----------|
| Motor Mounted       | Yes      |
| Size (hp)           | 3/4      |
| Voltage/Cycle/Phase | 115/60/1 |
| Enclosure           | ODP      |
| Motor RPM           | 1300     |
| Windings            | 1        |
| FLA (Amps)          | 10.6     |



\*Overall height may be greater depending on motor



- △ Operating Bhp point
- Operating point at Total SP
- Operating point at External SP
- Fan curve
- - - System curve
- - - Brake horsepower curve

## Sound Power by Octave Band

| Sound Data | 62.5 | 125 | 250 | 500 | 1000 | 2000 | 4000 | 8000 | LwA | dBA | Sones |
|------------|------|-----|-----|-----|------|------|------|------|-----|-----|-------|
| Inlet      | 79   | 78  | 79  | 72  | 65   | 65   | 60   | 54   | 75  | 63  | 12.6  |

## Notes:

All dimensions shown are in units of in.  
\*Please consult factory for actual motor amp draw  
LwA - A weighted sound power level, based on ANSI S1.4  
dBA - A weighted sound pressure level, based on 11.5 dB  
attenuation per Octave band at 5 ft - dBA levels are not  
licensed by AMCA International  
Sones - calculated using AMCA 301 at 5 ft



---

## Model: G-143-VG

### Direct Drive Centrifugal Roof Exhaust Fan

#### **Standard Construction Features:**

- Aluminum housing - Backward inclined wheel - Aluminum curb cap with prepunched mounting holes - Birdscreen - Ball bearing motors (sizes 100-180), sleeve bearing motors (sizes 60-95) - Motor isolated on shock mounts - Corrosion resistant fasteners

#### **Selected Options & Accessories:**

Motor - Vari-Green EC motor w/Mounted Potentiometer Dial  
UL/cUL 705 Listed - "Power Ventilators"  
Unit Warranty: 1 Yr (Standard)